

## FRONTIER SHOOT 2015 SCHEDULE

### Thr. Aug 4

9:00 a.m.- 5:00 p.m.	Shotgun Registration
9:00 a.m.- 5:00 p.m.	Shotgun Only
1:00 p.m.- 4:00 p.m.	Rifle Registration
1:00 p.m.- 4:00 p.m.	Silhouettes *
1:00 p.m.- 4:00 p.m.	Novelty Matches
1:00 p.m.- 4:00 p.m.	Long Hunter Range

\* All competitors in the silhouette matches who knock over all 5 animals at any distance will receive a special pin, regardless of overall score

### Fri. Aug 5

7:00 a.m.-	9:00 a.m. Breakfast
7:00 a.m.- 4:30 p.m.	Target shack open
7:00 a.m.-	4:30 p.m. Registration
8:30 a.m.- 4:00 p.m.	Line Matches
9:00 a.m.- 5:00 p.m.	Shotgun
10:00 a.m. - 3:00 p.m.	Primitive
11:30 a.m.- 1:00 p.m.	Lunch
12:00 p.m. - 1:00 p.m.	<b>Registration &amp; Target Closed</b>
2:00 p.m.- 4:00 p.m.	Knife & Hawk
5:00 p.m.- 5:30 p.m.	Protest
5:00 p.m.- 6:30 p.m.	Supper
7:30 p.m.- 8:30 p.m.	Silent Auction
11:30 p.m.-	Quiet Time

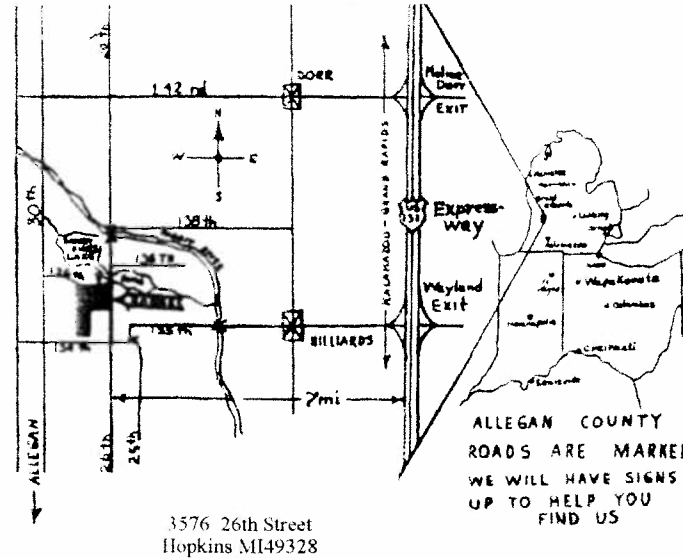
### Sat. Aug 6

7:00 a.m.- 9:00 a.m.	Breakfast
7:00 a.m.- 2:30 p.m.	Registration
7:00 a.m.- 3:00 p.m.	Target Shack
8:00 a.m.- 3:00 p.m.	Shotgun
8:30 a.m.- 4:00 p.m.	Line Matches
10:00 a.m.- 3:00 p.m.	Primitive Woods Walk
12:00 a.m.- 1:00 p.m.	<b>Registration &amp; Target Closed</b>
11:30 a.m.- 1:00 p.m.	Lunch
2:00 p.m.- 4:00 p.m.	Knife & Hawk
4:00 p.m.- 5:00 p.m.	Kids B-B Gun Matches
5:00 p.m.- 6:30 p.m.	Supper
5:30 p.m.- 6:00 p.m.	Protest
7:00 p.m.-	<b>All Awards - Shotgun, Primitive, Line</b>
1:30 a.m.-	Quiet in the campground

### Sun. Aug 7

7:00 a.m.- ?	Brunch
8:00 a.m.- 1:00 p.m.	Shotgun**
9:00 a.m.- 11:00 a.m.	Paper Novelty Targets**
9:00 a.m.- 11:00 a.m.	Primitive Bow**

\*\* Awards to follow



*Grand Valley Cap n Ballers Jag Shop*

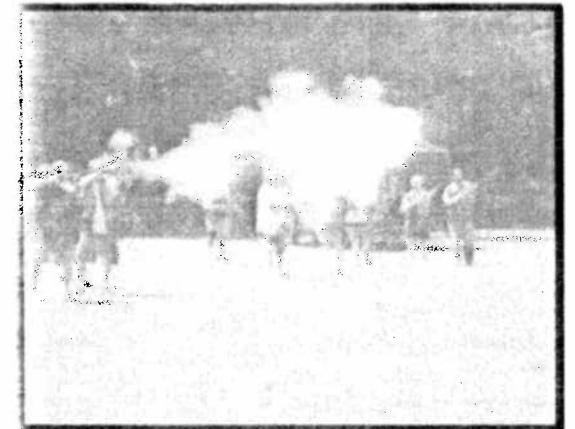
- Now Selling Black Powder -  
GOEX - Schuetzen - Swiss

*Call for availability :*

Jeff Terrell-269-792-4384  
Ron Fernwalt- 616-836-5760  
Casey Kinney-616-534-3961  
Larry Horrigan-269-793-3265  
Scott Silverman

## GRAND VALLEY CAP 'n' BALLERS™ MUZZLELOADING GUN CLUB

presents



**FRONTIER SHOOT  
2016  
August 4-7**



Visit our website  
[www.gvcnb.org](http://www.gvcnb.org)  
Like us on Facebook

## WELCOME MUZZLELOADERS

For more than 50 years GVCnB has presented one of the largest and best muzzle loading events in the Midwest. When you come to shoot at GVCnB, you will find something for competitors of all ages and experience—line, primitive, and silhouette matches, a complete shotgun program, traditional bow matches, and much more. And—our off-hand, bench, and shotgun ranges are covered. Meals will be available at the clubhouse; as will ice cream, (times will be posted).

**REGISTRATION:** Rifle, Pistol, etc.: A fee of \$25 per individual or \$40 per family (husband, wife, all children 17 and under) covers all regular matches, prize drawings, camping, and setting up as a trader. Each competitor must request his/her targets separately. To pre-order targets and/or to reserve a specific trading site, send your request, along with your registration fee, before July 20 to Dawn Thurkettle, P.O. Box 14, 2360 Locust Drive Dorr, MI 49323. Targets will then be waiting for you at the target shack. Each competitor may shoot as many matches as he or she is eligible for, but we respectfully request that you do not ask for targets you will not use, or for matches you are not eligible to shoot. *And*, each registered shooter will receive a ticket to be placed in a drawing for a door prize!

To register as a shotgunner *only*, fees are \$15 per individual or \$25 per family. In addition, if you also plan to shoot rifle and pistol an additional fee of \$10 individual, \$15 family is necessary to receive targets.

**CAMPING:** Both primitive and modern camping are available, and primitive *non*-shooters may register for \$10. You will find firewood and plenty of water available. Limited electricity is also available for lights only on a first-come-first serve basis at \$10. All persons occupying a camping site must register, whether shooting or not.

**PETS:** Owners are responsible for taking care of & cleaning up after their pets. Pets must be kept quiet and not allowed to roam freely. Failure to abide by these rules will result in the owner being asked to remove the pet!

### PLEASE NOTE :

Trade guns must be flintlocks of at least .54 cal. without a rear sight above the plane of the barrel and having a simple single trigger. Line matches may be shot any match any time each day. Competitors are responsible for stapling, posting, and pulling their own targets. You may use your own stapler. You may post more than one match in a relay, but must finish everything posted in that relay. **Please remove staples before turning in targets.** Offhand relays are 25 minutes; Bench and X-Stick matches at the high range are 25 minutes. Sight shades may be used. Pistol and revolver may use 2 relays. All matches are 5 shots except 27-32. Pistols and revolvers require a one hand hold. Matches 4 through 47 will pay 3 places.

*Grand Valley Cap 'N' Ballers™ reserve the right to make changes in this schedule where necessary.*

## PRIMITIVE PROGRAM

Primitive matches must be shot with traditional style arms having open sights and no shades. Participants must have a competitor number before competing. All stations are two (2) shots. Three falls of the hammer counts as a shot.

**FRIDAY:** There are 5 divisions: Percussion, Flint, Trade Gun, Women's, and Juniors through age 17. There are a total of 20 shots—2 at each station plus a tie breaker. Points will be added for appropriate period clothing. You must make a separate trip for each division. Scoring is an aggregate of the entire course.

**SATURDAY:** Woods Walk—Each station is a separate match. No points for costume. Traditional Rifle or Trade Guns only.

### LINE MATCHES

- |                        |   |   |
|------------------------|---|---|
| <b>OH AMS</b>          |   |   |
| 1. 25 yd               | } | <b>OH Novice AMS **</b>                   |
| 2. 50 yd               |   | 19. 25 yd                                 |
| 3. 100 yd              |   | 20. 50 yd                                 |
| <b>OH OS</b>           |   | <b>Youth X-Stick AMS</b>                  |
| 4. 25 yd               |   | (12 & Under Sta. I-5)                     |
| 5. 50 yd               |   | 23. 25 yd                                 |
| 6. 100 yd              |   | 24. 50 yd                                 |
| <b>OH Flint OS</b>     |   | <b>OH Juniors AMS</b>                     |
| 7. 25 yd               |   | (ages 13-17)                              |
| 8. 50 yd               |   | 25. 25 yd                                 |
| 9. 100 yd              |   | 26. 50 yd                                 |
| <b>OH Women's AMS</b>  |   | <b>Pistols &amp; Revolvers</b>            |
| 10. 25 yd              |   | (10 Shots)                                |
| 11. 50 yd              |   | 27. 25 yd P/R                             |
| 12. 25 yd Novelty      |   | 28. 25 yd Revolver                        |
| <b>OH Novelty AMS</b>  |   | 29. 50 yd P/R                             |
| 13. 25 yd              |   | 30. 50 yd Revolver                        |
| 14. 50 yd              |   | 31. 25 yd Flint Pistol                    |
| <b>Women's' Pistol</b> |   | 32. 50 yd Flint Pistol                    |
| 15. 25 yd              | } | 33. 25 yd Co-Ed P/R                       |
| 16. 50 yd              |   | (man & woman- must be shot in same relay) |
| <b>OH Trade Gun</b>    |   |   |
| 17. 25 yd              |   |   |
| 18. 50 yd              |   |   |

### X-Sticks -at high range

- 35. 50 yd AMS
- 36. 100 yd AMS
- 37. 50 yd OS
- 38. 100 yd OS

### Flint X Stick

- 39. 50 yd
- 40. 100 yd

### Bench-at high range

- 41. 50 yd AMS
- 42. 100 yd AMS
- 43. 50 yd OS
- 44. 100 yd OS

### OH Old Timers AMS (60 & Older)

- 47. 25 yd

[ ] = Aggregate

\*\* Novice—No prior wins at GVCnB

Jeff's Fun Target  
-TBA-

FYI—NMLRA Rules will be used unless otherwise noted. Range Officers' & Scorekeepers' decisions are final. Formal shooting jackets are not allowed in competition.

### Original Shotgun

All registered guests who go to the shotgun range and shoot an original shotgun, donated by GVCB club member, George Roberts, will be entered in a drawing for a chance to win it!

## SHOTGUN

**Shotgun Hours**—Registration: 9:00 a.m. on Thurs; 9 to 5 on Fri, 8 to 3 on Sat. Ties to be shot off Sat. at 3:30 p.m., All participants must have a competitor number. NMLRA rules will be followed except where noted

FYI—(\* \* \* Indicates that the gun must be checked before shooting.)

Any match having less than 5 competitors will pay one (1) place

### Matches Covered by Registration fee (No Re-entry)

- 62. GVCnB Men's Championship: 10 birds@10 yd—10@16—5@20—*Traveling Trophy*
- 63. GVCnB Ladies' Championship: 15 birds@10yd—10@16—5@20—*Traveling Trophy*
- 64. GVCnB Junior Championship: 10 birds@10 yd— 5@16— *Trophy*

### Re-entry Matches not covered by registration: any gun

- 70. Traditional Style : 5 birds@10 yd—5@16 or 5@16yd \* \* \*
- 71. Novice (see rules): 10 birds@10 yd
- 72. Ladies Thursday: 10 yards daily - 10 birds - Shoot off at 5 p.m.
- 73. Ladies Friday: 16 yards daily - 10 birds - Shoot off at 5 p.m.
- 74. Ladies Saturday: 20 yards daily-10 birds  
*(First place each day + 3 places for aggregate (matches 72, 73, 74))*
- 75. 18 yard Co-ed Protection: 20 birds (10 per person)  
*Traveling Trophy*
- 76. 10 yard Trap: 10 birds - 2 from each station
- 77. 16 yard Trap: 10 birds - 2 from each station
- 78. 20 yard Trap: 10 birds - 2 from each station  
*Percussion/flint aggregate—Matches 76, 77, 78 - Traveling Trophy + 3 places, sponsored by Larry Trantham*
- 79. Ladies 10 yard Trap: 10 birds - 2 from each station
- 80. Ladies 16 yard Trap: 10 birds - 2 from each station
- 81. Ladies 20 yard Trap: 10 birds - 2 from each station  
*Ladies aggregate—Matches 79, 80, 81 - Traveling Trophy + 3 places, sponsored by Ron Fernwalt*
- 82. Juniors 10 yard Trap: 10 birds - 2 from each station
- 83. Old Timers 16 yard Trap: 10 birds
- 84. Potee's 5 Stand: 10 birds
- 85. Thursday Daily: 15 birds at 10 yards - Shoot off at 5 p.m.
- 86. Friday Daily: 15 birds at 16 yards - Shoot off at 5 p.m.
- 87. Saturday Daily: 15 birds at 20 yards  
*1st place each day + 3 places for aggregate - Matches 85, 86, 87*

- 88. Trantham Protection: 20 birds @ 20 yd (10 birds/person)  
*Shot at 3:00 p.m. Saturday*

- 89. Flint 10 yards: 10 birds - 2 from each station
- 90. Flint 16 yards: 2 from each station  
*Flint Aggregate—Matches 89, 90— Traveling Trophy*

### Sunday Shotgun matches 8 a.m.—1:00 p.m. Run as Jackpot Shoot with any Sponsor money added to the pot

- 91. 10 yard Trap: 10 birds from each station
- 92. 16 yard Trap: 10 birds - 2 from each station
- 93. 20 yard Trap: 10 birds - 2 from each station
- 94. Juniors 10 yard Trap: 10 birds - 2 from each station
- 95. Ladies' 10 yd Trap—10 birds—2 from each station

*Sunday awards will be 50% payback at 50, 30, 20*